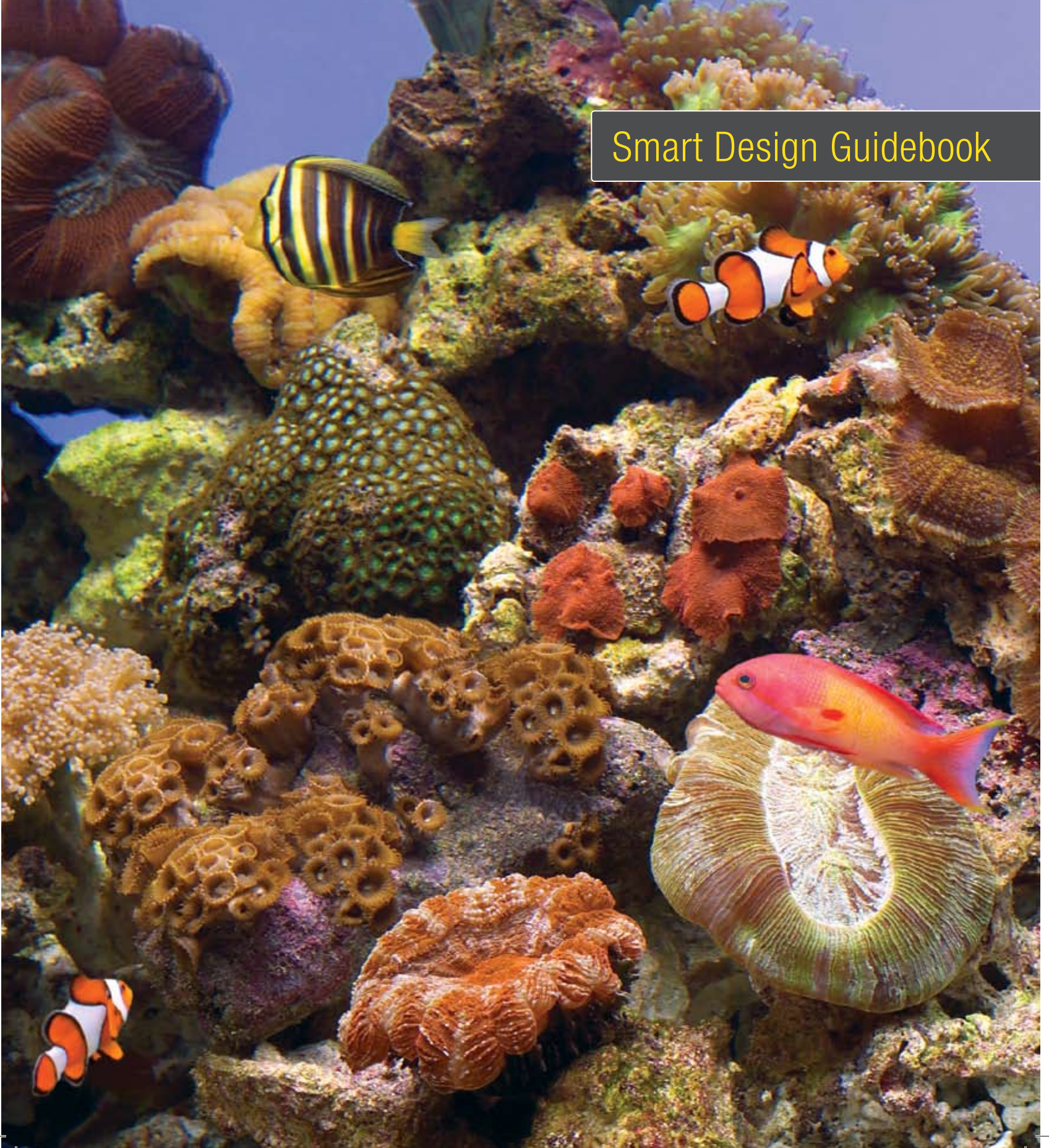




Smart Design. Superior Performance.

Smart Design Guidebook



Imagine

Your ultimate aquatic showcase begins here.

This Smart Design Guidebook by Marineland® features a unique line of aquariums and aquatic equipment, offering an incredible range of options and possibilities. Let it inspire you to fulfill your own vision of the ultimate aquatic showcase.



A Complete New Look at Marine.

Bigger, better aquariums, stands and canopies, sumps and pumps, skimmers and lighting. All working together.

From our new Deep Dimension* Corner-Flo™ Aquariums to our sophisticated new 24-Hour Lighting Systems, every component of the new Marine Series is available individually and as part of a complete, matching Marineland® reef-type system. In addition, Marine Series components can also be combined with other brands of aquarium equipment. We recommend you work with your retailer to plan the configuration that's ideal for fulfilling your own unique vision of an aquatic showcase.

- **Deep Dimension Corner-Flo Aquariums**—each 36 in. from front to back, from 36 in. to 72 in. in length; the largest production aquariums ever created for personal use.
- **Size-Matched Stands and Canopies**—built and size-matched to handle our Deep Dimension Aquariums and their filtration equipment.
- **High-Capacity Acrylic Sump Filtration Systems**—the ultimate solution for big tank filtration.
- **Premium Utility Pumps**—a range of versatile, flow adjustable, high-performance water movers.
- **Advanced In-Sump Protein Skimmers**—ideal for removing dissolved proteins and organics; smallest footprint available.
- **Sophisticated 24-Hour Lighting Systems**—24 in. to 72 in. in length, for the round-the-clock needs of any aquarium system.

*36 inches deep front-to-back

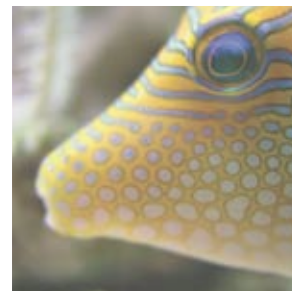
Deep Dimension* Corner-Flo™ Aquariums



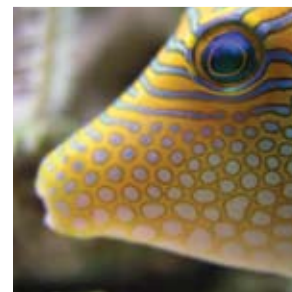
Until now, if you wanted an aquarium of comparably impressive dimensions, you needed custom-built. These new Deep Dimension Aquariums, however, are production-made, so they're not only of the highest quality, they're also remarkably affordable.

Each pre-drilled tank is capacity-matched with a full complement of high-efficiency operating components (see tabs), for the owner who demands the best.

- Four sizes to fit almost every interior:
 - 36 X 36 X 27 in.: 150 gal. (takes Model 2 Sump; single Corner-Flo)
 - 48 X 36 X 27 in.: 200 gal.
 - 60 X 36 X 27 in.: 250 gal.
 - 72 X 36 X 27 in.: 300 gal. (all three take Model 4 Sump; dual Corner-Flo)
- Built with the marine reef hobbyist in mind. Superb also for freshwater/tropical and marine fish-only applications.
- Available in standard glass or with Starphire® Ultra-Clear Glass options for maximized light transmission, high-definition color, a brilliant edge, and a stunning aquarium experience.
- Beautiful polished & beveled-glass corner construction.
- Standard-tank frames available with oak or black finish. Starphire tanks, black frames only.



Standard Glass



Starphire Ultra-Clear Glass

*36 inches deep front-to-back

Corner-Flo™

The discreet and super-efficient Corner-Flo system combines a pre-drilled aquarium with advanced-engineering water-flow technology.

- Maximizes water flow, minimizes flow noise.
- Eliminates filtration "dead zones."
- Draws water from surface and bottom; up to 700 GPH per Corner-Flo.
- Silicone-sealed to the back corner walls.
- Removable front panel for easy cleaning.



Adjustable Outlet Nozzles



Model: 48 X 36 X 27 in.

Beautiful Polished & Beveled Glass Corners

Deep Dimension Aquarium Prices

Model	Price with Standard Glass	Price with Starphire® Ultra-Clear Front Glass
36 X 36 X 27 in.: 150 gal.	\$	\$
48 X 36 X 27 in.: 200 gal.	\$	\$
60 X 36 X 27 in.: 250 gal.	\$	\$
72 X 36 X 27 in.: 300 gal.	\$	\$

Please see Product Specifications section for details.

Corner-Flo™ Pre-Drilled Aquariums



If you require a tank of smaller-than-reef dimensions, you can still enjoy the ultimate in water circulation technology and quality construction, for unsurpassed fishkeeping success.

The super-efficient Corner-Flo overflow system combines a high-quality pre-drilled tank with advanced-design water-flow technology.

- Available from 55 to 265 gallons.
- Maximizes water flow, minimizes flow noise.
- Eliminates filtration “dead zones.”
- Draws water from surface & bottom; up to 700 GPH per Corner-Flo.
- Removable front panel for easy cleaning.
- Complete Plumbing Kit included.
- Complements the new, improved modular Acrylic Sumps (see tab).



Adjustable Outlet Nozzles

Corner-Flo Aquarium Prices

Description	Length X Front-to-Back X Height (inches)	Price
55–Single Corner-Flo	48 X 13 X 20	\$
56–Column Single Corner-Flo	30 X 18 X 24	\$
60–Single Corner-Flo	48 X 13 X 24	\$
65–Single Corner-Flo	36 X 18 X 24	\$
70 Corner–Single Corner-Flo	48 X 22 X 25	\$
75–Single Corner-Flo	48 X 18 X 21	\$
80 Euro–Single Corner-Flo	48 X 18 X 27	\$
90–Single Corner-Flo	48 X 18 X 24	\$
90 Surfline–Single Corner-Flo	48 X 18 X 24	\$
110–Single Corner-Flo	48 X 18 X 30	\$
120–Single Corner-Flo	48 X 24 X 24	\$
120 x H–Dual Corner-Flo	60 X 18 X 26	\$
125–Dual Corner-Flo	72 X 18 X 22	\$
150 x H–Single Corner-Flo	48 X 24 X 30	\$
150–Dual Corner-Flo	72 X 18 X 27	\$
180 Wide–Dual Corner-Flo	72 X 24 X 24	\$
220 x H–Dual Corner-Flo	72 X 24 X 30	\$
265–Dual Corner-Flo	84 X 24 X 30	\$

Please see Product Specifications section for details.

Size-Matched Stands and Canopies



The Monterey range of stylish premium hardwood stands and canopies incorporates innovative, highly functional design features. They match up not only with our own aquariums and components (see tabbed sections), but also with other brands of standard and overflow-style aquariums. Attractive, functional, affordable alternatives to custom cabinetry.

- Sized and built to match the entire line of Marineland® Corner-Flo™ Aquariums (see tab), including the new reef-sized Deep Dimension* Aquariums (see tab).
- Generous under-tank areas with both side and front access easily house High-Capacity Acrylic Sump Filtration Systems.
- Exclusive feature: Both side panels are removable for easy access and setup.
- Easy access to lighting, feeding or other maintenance from either the front opening doors or hinged canopy.
- Available with three different finish options. Raised-panel doors. Concealed European hinges. Solid tops with plumbing cutouts.
- Designed to work with many different brands of components.
- Canopies accommodate Sophisticated 24-Hour Lighting Systems (see tab) and feature excellent heat-dissipating ventilation.

*36 inches deep front-to-back



Hinged Top-Opening Canopy for Easy Access

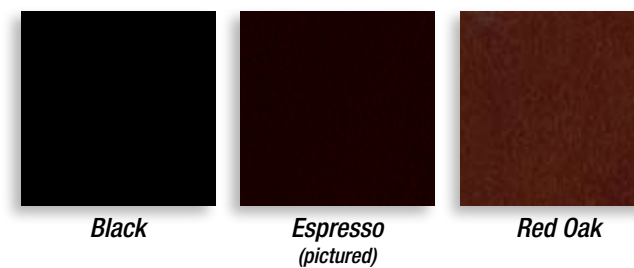


Concealed European Hinges



Model: 4 foot Stand & Canopy with Espresso Finish

Monterey Stand & Canopy Finish Options



Black

Espresso (pictured)

Red Oak

Monterey Stand & Canopy Prices

Model	Price	Model	Price
3 ft. Stand	\$	3 ft. Canopy	\$
4 ft. Stand	\$	4 ft. Canopy	\$
5 ft. Stand	\$	5 ft. Canopy	\$
6 ft. Stand	\$	6 ft. Canopy	\$

Please see Product Specifications section for details.

Size-Matched Stands and Canopies



The Deluxe Pine Majesty range of stylish solid wood stands and canopies provides sturdy support and a beautiful display for show-quality aquariums. They match up not only with our own aquariums and components (see tabbed sections), but also with other brands of standard and overflow-style aquariums. Attractive, functional, affordable alternatives to custom cabinetry.

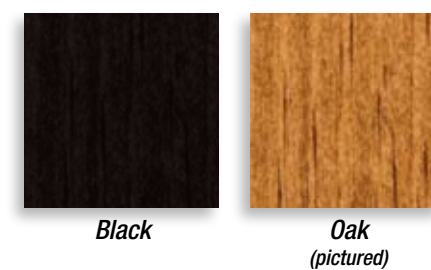
- Sized and built to match the entire line of Marineland Corner-Flo™ Aquariums (see tab), including the new reef-sized Deep Dimension* Aquariums (see tab).
- Generous under-tank areas for filter systems and supplies, and for easy, convenient maintenance.
- Designed to work with many different brands of components.
- Canopies accommodate Sophisticated 24-Hour Lighting Systems (see tab), and feature excellent heat-dissipating ventilation.

*36 inches deep front-to-back



Model: 3 foot Stand & Canopy with Oak Finish

Pine Majesty Stand & Canopy Finish Options



Black

Oak
(pictured)

Pine Majesty Stand & Canopy Prices

Model	Price	Model	Price
3 ft. Stand	\$	3 ft. Canopy	\$
4 ft. Stand	\$	4 ft. Canopy	\$
5 ft. Stand	\$	5 ft. Canopy	\$
6 ft. Stand	\$	6 ft. Canopy	\$

Please see Product Specifications section for details.

High-Capacity Acrylic Sump Filtration Systems

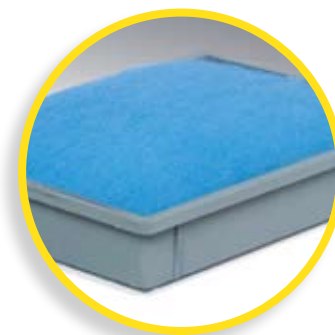


Four silent water-return models, for tanks from 55 to 300 gallons. They're the ultimate solution for big tank filtration—for marine, freshwater and reef systems.

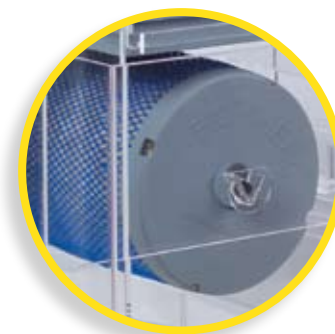
Created specifically to meet the demands of our new high-capacity Deep Dimension* Corner-Flo™ Aquariums (see tab), these sleek sumps are also an ideal match for standard-depth Corner-Flo tanks (see tab), as well as other brands of tanks and stands.

These sumps set a new design standard, with exclusive Marineland® features like:

- New design fits easily in stand. The ultimate solution for big tank filtration.
- Front loading easy-access media trays, plus patented high-capacity BIO-Wheel® (included; removable).
- Flame-polished edges; unsurpassed quality throughout.
- Reduces need to top-off tank every two days (tank stays full, evaporation occurs in sump).
- Allows for more dissolved oxygen: of special benefit in saltwater tanks.
- Dedicated chamber for Marine Series protein skimmer (see tab) maintains constant water depth.
- High volume of flow through sump helps minimize debris buildup on bottom.
- Available: replacement carbon and poly media for drip trays.



Easy-Access Media Trays



Patented High-Capacity BIO-Wheel



Model: 3

High-Capacity Acrylic Sump Prices

Model	Price
1	\$
2	\$
3	\$
4	\$

Please see Product Specifications section for details.

*36 inches deep front-to-back

Premium Utility Pumps



Seven new high-efficiency, flow adjustable Marine Series pumps meet the most demanding requirements of saltwater and freshwater systems. Engineered to handle the capacities of our new Deep Dimension* Corner-Flo™ Aquariums (see tab) and our new High-Capacity Acrylic Sump Filtration Systems (see tab). They're also more than a match for other brands of aquariums and sumps.

- Compact design optimized for maximum output with low power usage.
- Quiet operation with little or no heat. Motors self-protected against overheating.
- Able to run internal/submersible and external**.
- UL-listed. Truly stated flow rates.
- All necessary attachment hardware supplied standard.
- Standardized NPT fittings**. Screened intake.



*36 inches deep front-to-back
** Excludes Model 400



Model: NJ400

Model: NJ1800

Pump Flow

Model	Watts	Amps	Max. Flow GPH	Max. Flow LPH	Max. Head Height Inches
NJ400	7	0.08	106	401	26
NJ900	10	0.12	247	935	50
NJ1100	21	0.32	294	1113	69
NJ1800	40	0.84	474	1794	87
NJ3000	58	0.96	775	2933	110
NJ4500	58	1.25	1175	4448	122
NJ5500	75	1.30	1384	5220	157

Premium Utility Pumps Prices

Model	Price
NJ400	\$
NJ900	\$
NJ1100	\$
NJ1800	\$
NJ3000	\$
NJ4500	\$
NJ5500	\$

Please see Product Specifications section for details.

Advanced In-Sump Protein Skimmers



Two sleek, easy-to-install, single-column protein skimmers are the ideal solutions for in-sump installation, reflecting the design and engineering excellence of the entire Marine Series. Optimized for our High-Capacity Acrylic Sump Filtration Systems (see tab), they rapidly and efficiently remove dissolved proteins and organics from your aquarium water.

- Bottom-mounted motor with industrial-designed output.
- Model 100 for up to 100 gallon capacity tanks. Model 300 for up to 305 gallons.
- Designed for Corner-Flo™ tanks (see tab)—both standard sizes and Deep Dimension* Aquariums (see tab)—and their capacity-matched sumps (see tab).
- Smallest footprint of any professional skimmers on the market.
- Needle-wheel impeller. No unsightly external pipes, hoses or sponges.
- Adjustable industrial-designed drain line inhibits escape of bubbles into the sump.



*36 inches deep front-to-back



Bottom-Mounted Motor



Needle Wheel Impeller



Precision Flow Control

In-Sump Protein Skimmer Prices

Model	Max. Tank Capacity	Price
100	100 gal.	\$
300	305 gal.	\$

Please see Product Specifications section for details.

Sophisticated 24-Hour Lighting Systems



Integrated 3-mode light systems designed to match Marineland® aquariums and canopies. Separate timing of each light type makes possible a completely customizable light profile, so you can enjoy your aquarium at any hour.

- Satisfy the 24-hour needs of marine, reef, plant, or freshwater life.
- Integrated 3-mode digital timer, for a completely customizable light profile.
- Highest light output in their class: a balanced mix of HQI metal halide, high-output T5 fluorescent, and LED moonlight simulation.
- Each light type controlled by its own three-mode digital timer.

Unlike other three-mode lighting systems, Marine Series fixtures feature:

- Five lengths—24 in.*, 36 in., 48 in., 60 in., and 72 in.—to fit most aquarium sizes.
- **High intensity 14,000K HQI metal halide lamps.** 24 and 36 in. models—one each; 48 and 60 in. models—two each; 72 in. model—three each. Each lamp 150 watts.
- **H0 T5 actinic lamps** to intensify the blue wavelengths. Penetrate deeper, especially to meet the photosynthetic needs of invertebrates. 24 in.—four 24-watt lamps. 36 in.—four 39-watt lamps. 48 and 60 in.—four 54-watt lamps. 72 in.—eight 39-watt lamps.
- **LED accent lights** to replicate moonlight and help coral reproduction and nighttime viewing and feeding. 24 and 36 in.—two 1-watt LEDs each. 48 and 60 in.—four 1-watt LEDs each. 72 in.—six 1-watt LEDs.
- Single 10 ft. cord for easiest installation and maintenance.
- Internal electronic ballasts. Interchangeable accent strips.
- Adjustable legs are included. Wire hanging kit available separately for above-tank installation.

* The 24 in. model, suitable for many tanks, is not applicable to our new Deep Dimension Aquariums, each at least 36 in. in length and width.

High Output Lighting Mix



Model: 48 inch Light Hood



Integrated Timer



Single-Piece Adjustable Legs



Single Power Cord

Lighting Systems Prices

Model	Price
24 in.	\$
36 in.	\$
48 in.	\$
60 in.	\$
72 in.	\$

Please see Product Specifications section for details.

Marine Series Product Specifications



Deep Dimension Corner-Flo™ Aquariums & Glass Canopies

Description (all 36 in. horizontal depth)	Empty Weight, lbs.	Item #	Price
150 gal. 36 in. wide Starphire® Glass Front-Black Trim	220	97043	\$
200 gal. 48 in. wide Starphire Glass Front-Black Trim	285	97044	\$
250 gal. 60 in. wide Starphire Glass Front-Black Trim	360	97045	\$
300 gal. 72 in. wide Starphire Glass Front-Black Trim	460	97046	\$
150 gal. 36 in. wide Standard Glass-Black Trim	220	97035	\$
150 gal. 36 in. wide Standard Glass-Oak Trim	220	97039	\$
200 gal. 48 in. wide Standard Glass-Black Trim	285	97036	\$
200 gal. 48 in. wide Standard Glass-Oak Trim	285	97040	\$
250 gal. 60 in. wide Standard Glass-Black Trim	360	97037	\$
250 gal. 60 in. wide Standard Glass-Oak Trim	360	97041	\$
300 gal. 72 in. wide Standard Glass-Black Trim	460	97038	\$
300 gal. 72 in. wide Standard Glass-Oak Trim	460	97042	\$
36 in. Glass Canopy	44	36651	\$
48 in. Glass Canopy	53	36652	\$
60 in. Glass Canopy	60	36653	\$
72 in. Glass Canopy	67	36654	\$

Corner-Flo™ Pre-Drilled Aquariums

Description	Width X Height X Depth, in.	Empty Weight, lbs.	Item #, Black Frame	Item #, Oak Frame	Price
55 with single Corner-Flo	48 X 13 X 20	62	97000-3	97016-4	\$
56 Column with single Corner-Flo	30 X 18 X 24	61	97001-0	97017-1	\$
60 with single Corner-Flo	48 X 13 X 24	66	97032-4	97033-1	\$
65 with single Corner-Flo	36 X 18 X 24	88	97002-7	97018-8	\$
70 Corner with single Corner-Flo	48 X 22 X 25	110	97034-8	N/A	\$
75 with single Corner-Flo	48 X 18 X 21	83	97003-4	97019-5	\$
80 Euro with single Corner-Flo	48 X 18 X 27	107	97004-1	97020-1	\$
90 with single Corner-Flo	48 X 18 X 24	121	97005-8	97021-8	\$
90 Surfline with single Corner-Flo	48 X 18 X 24	120	97006-5	N/A	\$
110 with single Corner-Flo	48 X 18 X 30	214	97007-2	97023-2	\$
120 with single Corner-Flo	48 X 24 X 24	100	97008-9	97024-9	\$
120 x H with dual Corner-Flo	60 X 18 X 26	130	97010-2	97026-3	\$
125 with dual Corner-Flo	72 X 18 X 22	237	97011-9	97027-0	\$
150 x H with single Corner-Flo	48 X 24 X 30	150	97009-6	97025-6	\$
150 with dual Corner-Flo	72 X 18 X 27	243	97012-6	97028-7	\$
180 Wide with dual Corner-Flo	72 X 24 X 24	300	97013-3	97029-4	\$
220 x H with dual Corner-Flo	72 X 24 X 30	350	97014-0	97030-0	\$
265 with dual Corner-Flo	84 X 24 X 30	500	97015-7	97031-7	\$

Monterey Aquarium Stands and Canopies

Description (length X horizontal depth, in.; all 27 in. in height)	Weight, lbs.	Item #	Price
36 X 36 Monterey Stand-Black	88	60360	\$
36 X 36 Monterey Canopy-Black	53	60363	\$
48 X 36 Monterey Stand-Black	117	60366	\$
48 X 36 Monterey Canopy-Black	69	60369	\$
60 X 36 Monterey Stand-Black	145	60372	\$
60 X 36 Monterey Canopy-Black	83	60375	\$
72 X 36 Monterey Stand-Black	172	60378	\$
72 X 36 Monterey Canopy-Black	101	60381	\$
36 X 36 Monterey Stand-Red Oak	88	60361	\$
36 X 36 Monterey Canopy-Red Oak	53	60364	\$
48 X 36 Monterey Stand-Red Oak	117	60367	\$
48 X 36 Monterey Canopy-Red Oak	69	60370	\$
60 X 36 Monterey Stand-Red Oak	145	60373	\$
60 X 36 Monterey Canopy-Red Oak	83	60376	\$
72 X 36 Monterey Stand-Red Oak	172	60379	\$
72 X 36 Monterey Canopy-Red Oak	101	60382	\$
36 X 36 Monterey Stand-Espresso	88	60362	\$
36 X 36 Monterey Canopy-Espresso	53	60365	\$
48 X 36 Monterey Stand-Espresso	117	60368	\$
48 X 36 Monterey Canopy-Espresso	69	60371	\$
60 X 36 Monterey Stand-Espresso	145	60374	\$
60 X 36 Monterey Canopy-Espresso	83	60377	\$
72 X 36 Monterey Stand-Espresso	172	60380	\$
72 X 36 Monterey Canopy-Espresso	101	60383	\$



Marine Series Product Specifications



Deluxe Pine Majesty Aquarium Stands and Canopies

Description (length x horizontal depth, in.; all 27 in. in height)	Weight, lbs.	Item #	Price
36 X 36 Stand-Black	56	70473	\$
36 X 36 Canopy-Black	44	70475	\$
48 X 36 Stand-Black	74	70477	\$
48 X 36 Canopy-Black	57	70479	\$
60 X 36 Stand-Black	92	70481	\$
60 X 36 Canopy-Black	68	70483	\$
72 X 36 Stand-Black	109	70485	\$
72 X 36 Canopy-Black	83	70487	\$
36 X 36 Stand-Oak	56	70474	\$
36 X 36 Canopy-Oak	44	70476	\$
48 X 36 Stand-Oak	74	70478	\$
48 X 36 Canopy-Oak	57	70480	\$
60 X 36 Stand-Oak	92	70482	\$
60 X 36 Canopy-Oak	68	70484	\$
72 X 36 Stand-Oak	109	70486	\$
72 X 36 Canopy-Oak	83	70488	\$

High-Capacity Acrylic Sump Filtration Systems

Description (Compatible Corner-Flo Aquariums)	Case Dimensions (L X W X H, in.)	Weight, lbs.	Item #	Price
Model 1 (55, 56, 60, 65, 70 Corner)	31.313 x 13.438 x 25.000	25.2	36200	\$
Model 2 (75, 80 Euro, 90, 90 Surfline, 110, 120, 150, 150DD)	34.188 x 15.875 x 25.125	25.6	36201	\$
Model 3 (120 XH, 125, 150)	41.1875 x 17.5625 x 22.625	38.7	36202	\$
Model 4 (125, 180, 200 DD, 220XH, 250 DD, 265, 300DD)	41.1875 x 17.5625 x 22.625	39.2	36203	\$

Premium Utility Pumps

Description	Watts	Amps	Max. Flow GPH	Max. Flow LPH	Max. Head Height, in.	Item#	Price
NJ 400 Euro (106 GPH)	7	0.08	106	401	26	NJ400	\$
NJ 900 Euro (247 GPH)	10	0.12	247	935	50	NJ900	\$
NJ 1100 Euro (294 GPH)	21	0.32	294	1113	69	NJ1100	\$
NJ 1800 Euro (474 GPH)	40	0.84	474	1794	87	NJ1800	\$
NJ 3000 Euro (775 GPH)	58	0.96	775	2933	110	NJ3000	\$
NJ 4500 Euro (1175 GPH)	58	1.25	1175	4448	122	NJ4500	\$
NJ 5500 Euro (1384 GPH)	75	1.30	1384	5220	157	NJ5500	\$

Model #	Pump Intake	Pump Output	Barb Fitting Step 1	Barb Fitting Step 2
400	n/a	1/2" hose connection (not a barb)	n/a	n/a
900	5/8" hose connection (not a barb)	1/2" female NPT threaded/ 1/2" hose connection (not a barb)	1/2" male NPT X 3/4" hose barb	n/a
1100	5/8" hose connection (not a barb)	1/2" female NPT threaded/ 1/2" hose connection (not a barb)	1/2" male NPT X 3/4" hose barb	n/a
1800	3/4" female NPT	3/4" female NPT	3/4" male NPT X 1" hose barb	3/4" male NPT X 3/4" hose barb
3000	3/4" female NPT	3/4" female NPT	3/4" male NPT X 1" hose barb	3/4" male NPT X 3/4" hose barb
4500	1"	1"	3/4"	1"
5500	1"	1"	3/4"	1"

Advanced In-Sump Protein Skimmers

Description	Case Dimensions (L X W X H, in.)	Item #	Price
In-Sump Protein Skimmer (100 gallons)	18.875 X 6.375 X 5.75	MSPS100	\$
In-Sump Protein Skimmer (305 gallons)	24.75 X 8.75 X 7.75	MSPS300	\$

24-Hour Lighting Systems

Description	# of 150W HQI Metal Halide Lamps 14,000K	# of H0 T5 Actinic Fluorescent Lamps	# of 1W LED Lamps	Item #	Weight, lbs.	Price
24 in. length Light Hood	1	4-24W	2	32980	22	\$
36 in. length Light Hood	1	4-39W	2	32981	29	\$
48 in. length Light Hood	2	4-54W	4	32982	40	\$
60 in. length Light Hood	2	4-54W	4	32983	46	\$
72 in. length Light Hood	3	8-39W	6	32984	63	\$

Note: the 24 in. Light Hood, suitable for many tanks, is not applicable to Deep Dimension Aquariums, since each tank is at least 36 in. in length and width.



www.marineland.com

© 2008 Marineland

A012226